



Woodlynn Village
2122 Woodlynn Avenue
Maplewood, Minnesota 55109
(651) 779-9448
www.woodlynnvillage.com



878 square feet
Single level, two-bedroom unit

Air conditioning

Electric & Gas individually metered

Appliances

- Range
- Garbage Disposal
- Refrigerator

Wall to wall carpeting

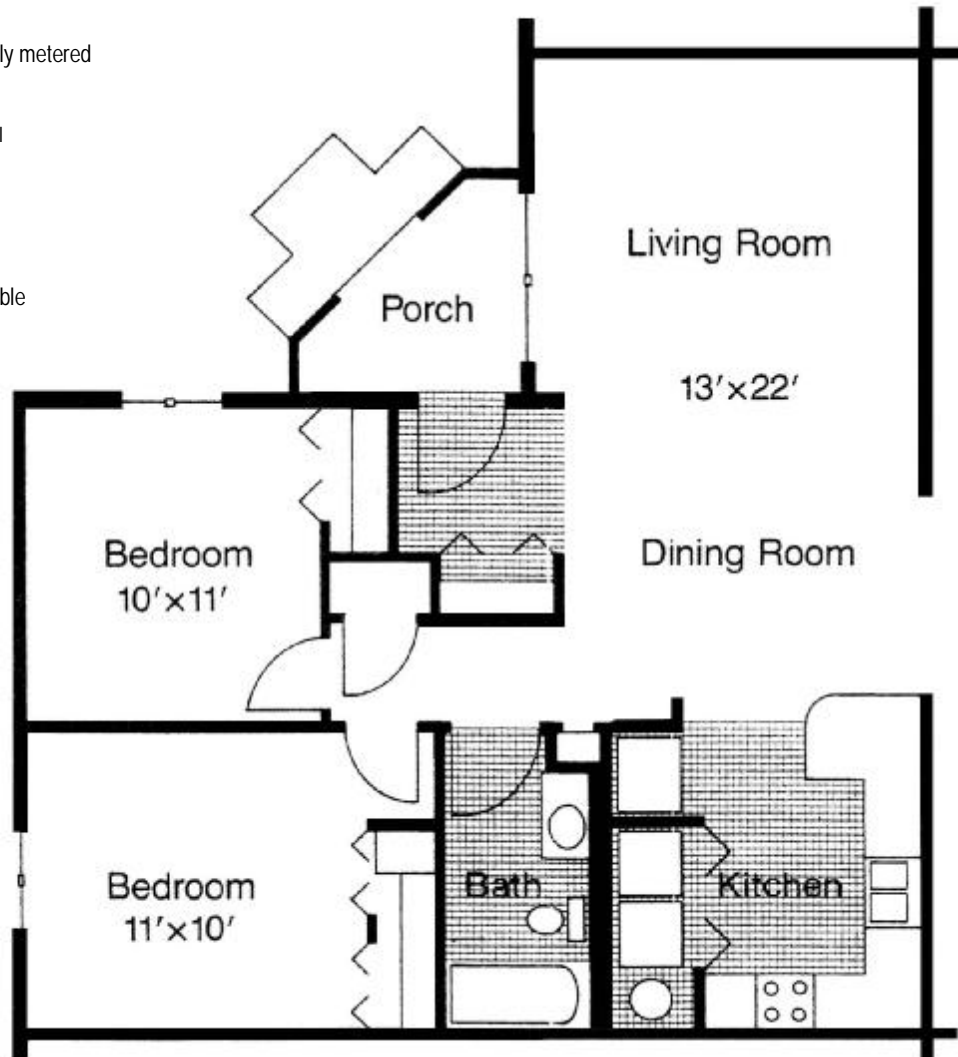
Vinyl flooring

Protected entryway

Front porch

Mini-storage units available

Garages available



Chesapeake 2 Bedroom